

STRIPES

DIGITAL WALL COVERINGS



VOLUME 1.



STRIPES

Digital premium wall coverings is an exceptional product imagined through an association & collaboration between the leading companies in the fields of décor and digital technology.

We introduce to you for the first time in India, large width size (54inches) and linear length of (40meters) premium wall coverings. The product brings together HP's Digital Latex Print Technology on Alshstrom paper by Alhstrom Munksjo, Belgium- the global leader in manufacturing of non-woven paper, and our studio, that has curated an exclusive collection of designs that are trendy & fashionable. All products are environmentally friendly with Green Guard certifications.

A made-in-India initiative, our product range of premium wall coverings are catalogued thematically, available as Stripes, Abstract, Textures, Pastels, Kids Collection, Damask, Grunge & Naturals.

Bring the finest into your spaces!



Certified for
HP Latex Inks



The image features decorative floral elements in the corners. In the top right, there are light green leaves and branches. In the bottom left, there are similar light green leaves and branches. The central focus is the word 'STRIPES' in large, stylized, 3D block letters. Each letter is filled with a different pattern of stripes or geometric shapes in various colors.

STRIPES

The NewAge wall covering bringing joy to your loved spaces

Volume 1

·INDEX·



A

B

C



A

B

C



A

B

C



A

B

C



A

B

C



A

B

C



A

B

C



A

B

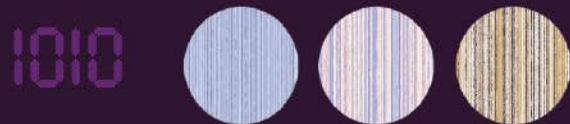
C



A

B

C



A

B

C

·INDEX·



A

B

C



A

B

C



A

B

C



A

B

C



A

B

C



A

B

C



A

B

C



A

B

C



A

B

C



A

B

C



1001 A



1001 B





1001 C





1002 A





1002 B





1002 C





1003 A



1003 B



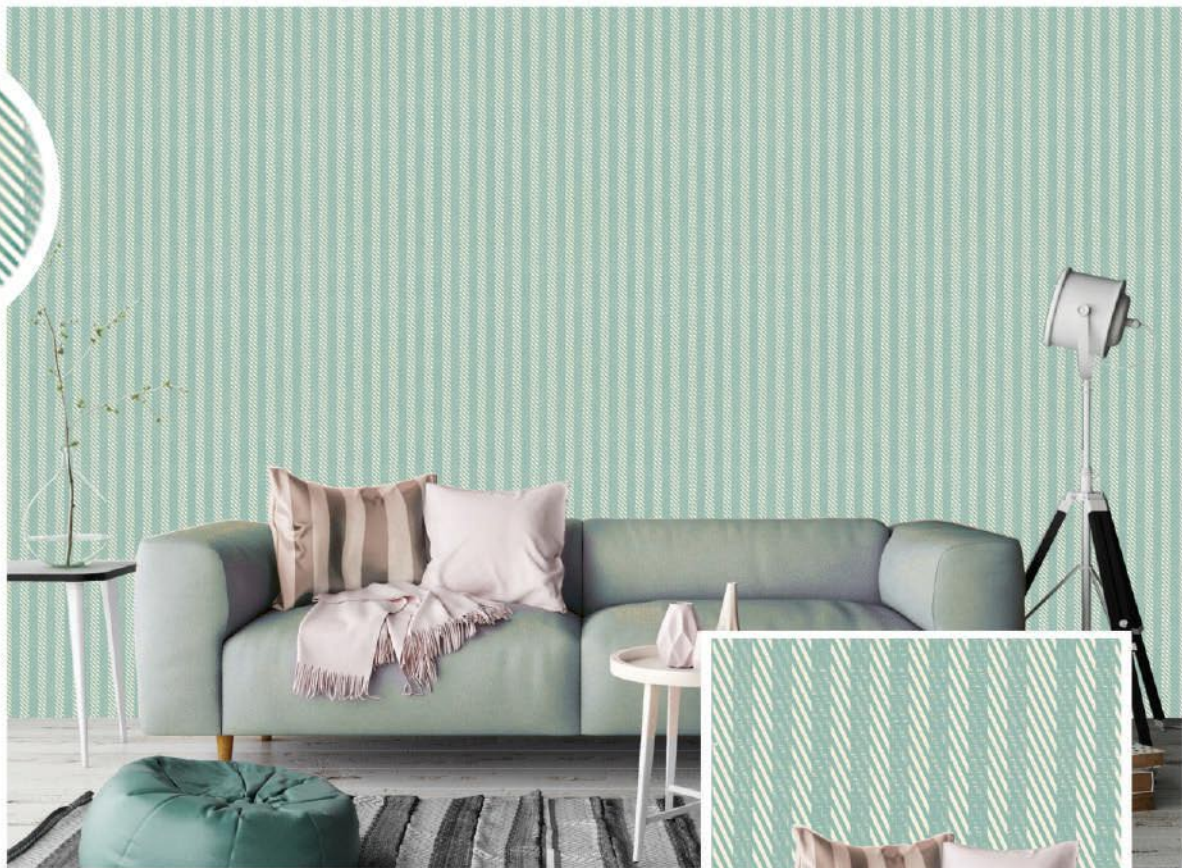


1003 C

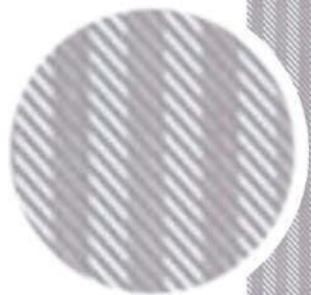


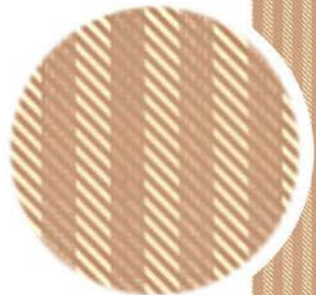


1004 A

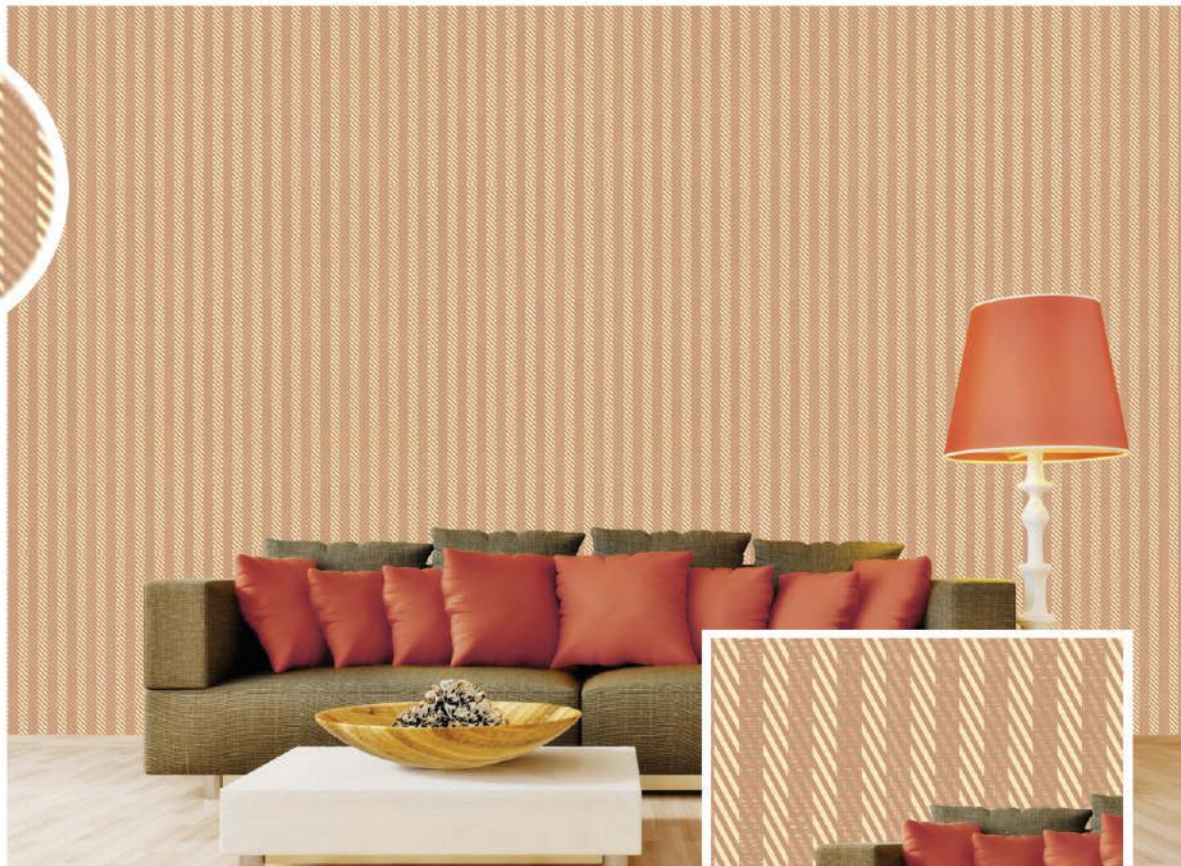


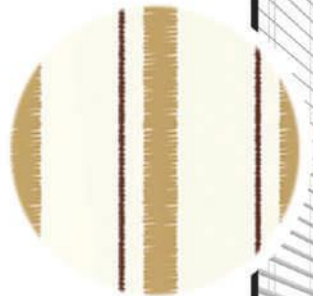
1004 B





1004 C





1005 A



1005 B





1005 C





1006 A



1006 B





1006 C





1007 A





1007 B





1007 C

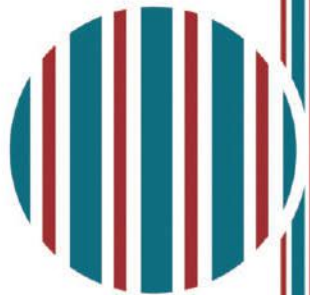




1008 A



1008 B





1008 C

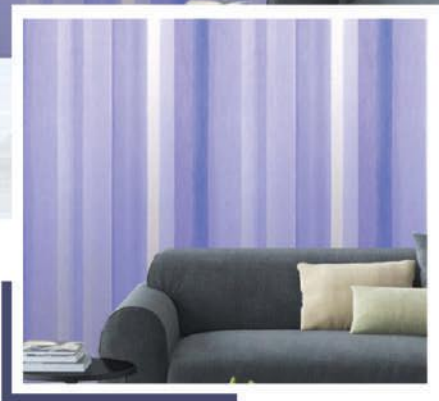




1009 A

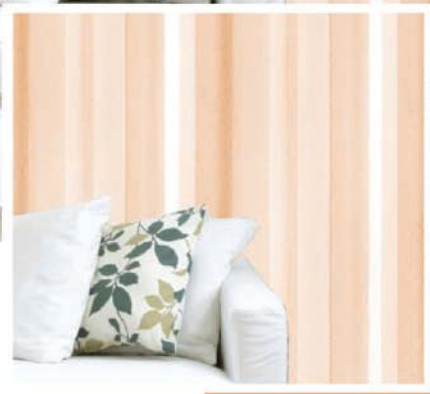
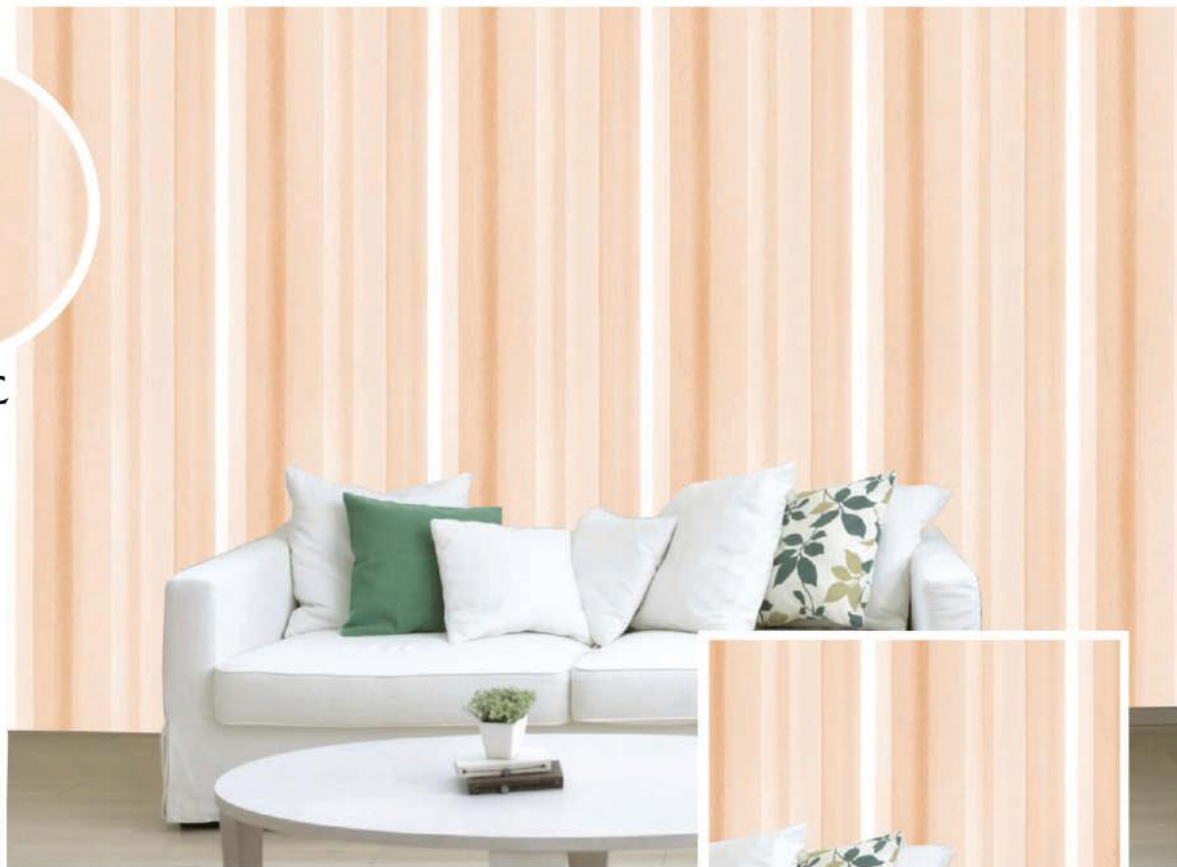


1009 B





1009 C

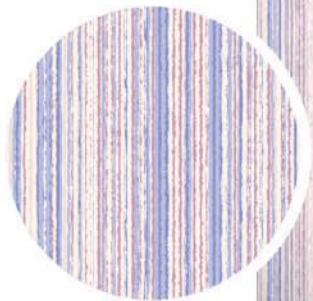




1010 A



1010 B





1010 C



1011 A





1011 B





1011 C





1012 A



1012 B





1012 C





1013 A



1013 B





1013 C



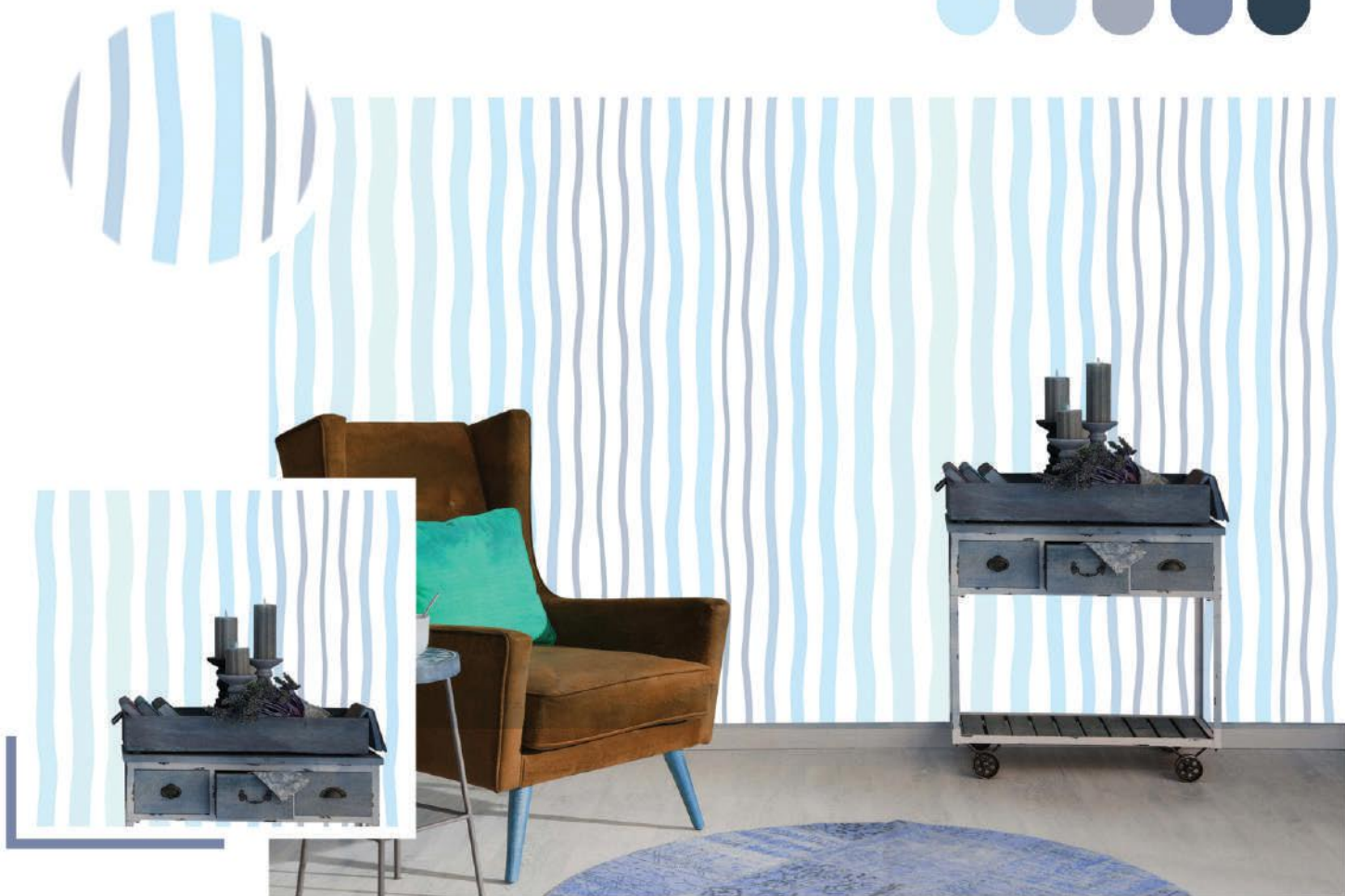
1014 A

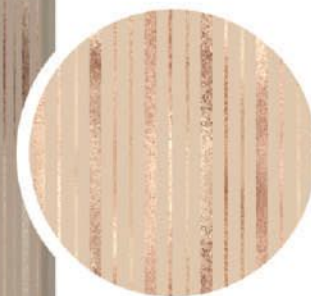
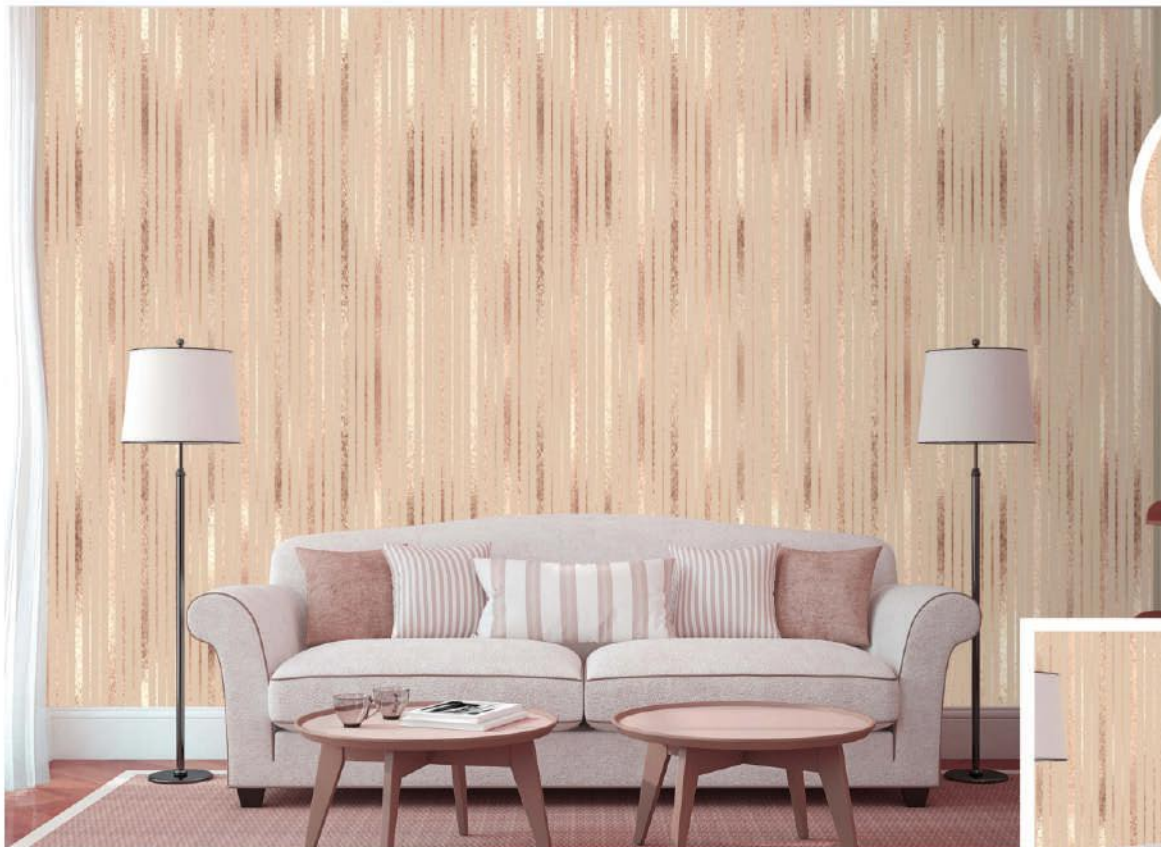


1014 B

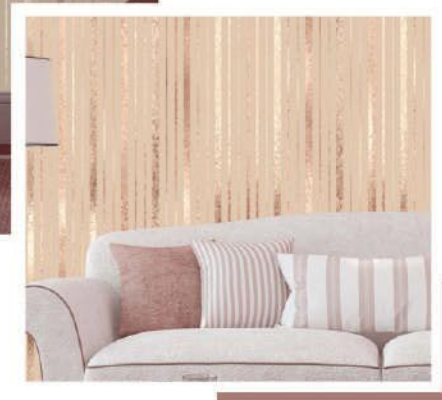


1014 C



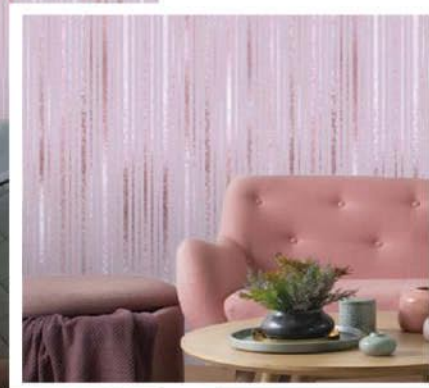
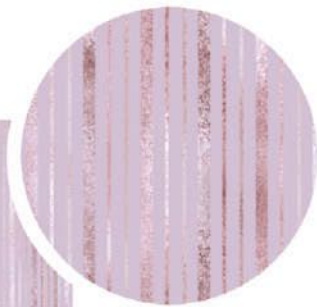


1015 A





1015 B



1015 C



1016 A



1016 B



1016 C

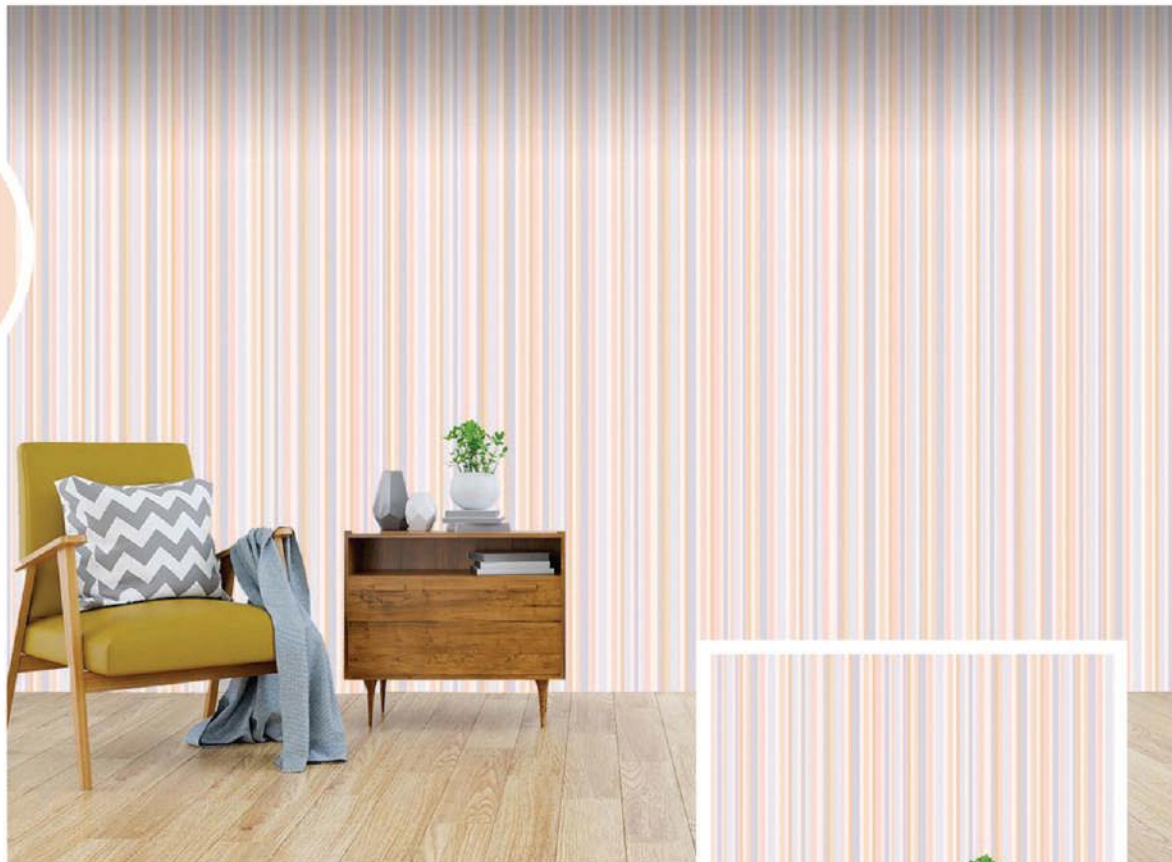


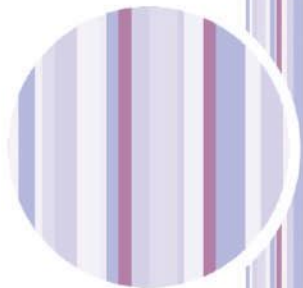


1017 A

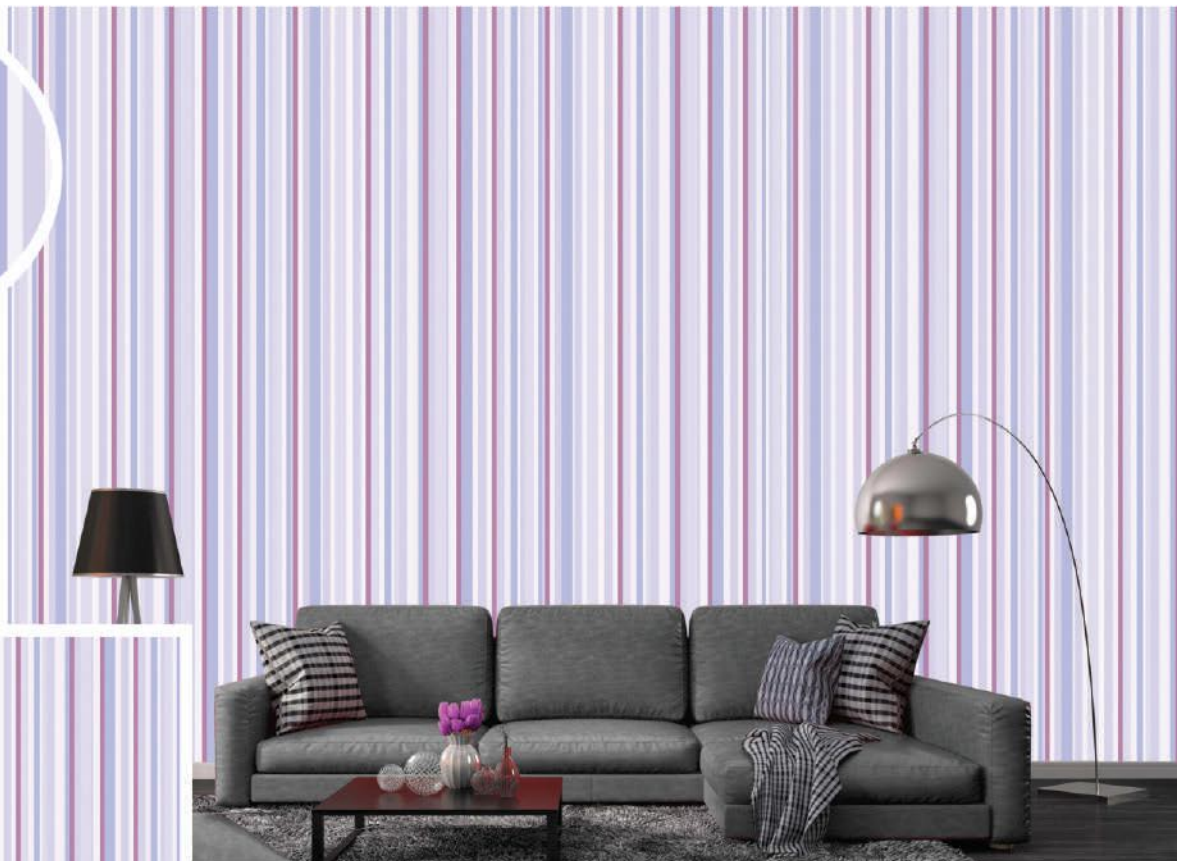


1017 B





1017 C





1018 A



1018 B





1018 C



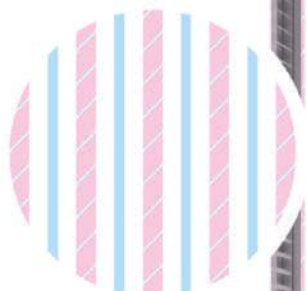
1019 B





1019 A





1019 C





1020 A



1020 B





1020 C







STRIPES

FEATURES



WASHABLE



SPONGEABLE



PASTE
THE WALL



GOOD
LIGHTFASTNESS



STRAIGHT
MATCH



ECO
FRIENDLY



Certified for
HP Latex Inks



